

TENDER BULLETIN

NO. 05 OF 2021/2022 FY
REF: 10/3/6/5

30 APRIL 2021



LIMPOPO

PROVINCIAL GOVERNMENT
REPUBLIC OF SOUTH AFRICA

This document is also available on the following website:

www.limtreasury.gov.za

Provincial Supply Chain Management Office

TABLE OF CONTENTS

	Page No.
1. REPORTING FRAUDULENT AND CORRUPT ACTIVITIES.....	03
2. INSTRUCTIONS.....	04
3. BID INVITATIONS FOR SUPPLIES, SERVICES AND DISPOSALS	05-06
4. CANCELLED BIDS	07
5. GENERAL NOTICES.....	08
ANNEXURE 1: ADDRESS LIST AND CONTACT DETAILS: PROVINCIAL DEPARTMENTS.....	09-10
ANNEXURE 2: ADDRESS LIST AND CONTACT DETAILS: PUBLIC ENTITIES.....	11
ANNEXURE 3: ADDRESS LIST AND CONTACT DETAILS: PROVINCIAL TREASURY TENDER ADVISE CENTRES	12
ANNEXURE 4: ADDRESS LIST AND CONTACT DETAILS: SATELLITE OFFICES	13
6. SELF REGISTRATION PROCESS.....	14

REPORT

FRAUDULENT & CORRUPT ACTIVITIES ON GOVERNMENT PROCUREMENT SYSTEM

National Anti-Corruption @ 0800 701 701

Security and Investigating Services – Limpopo Provincial Treasury @ 015 298 7196

ALL COMPLAINTS/CONCERNS RELATED TO SCM NON-COMPLIANCE MUST BE REPORTED TO:

LIMPOPO PROVINCIAL TREASURY

PRIVATE BAG X 9486

POLOKWANE

0700

PROVINCIAL TREASURY, FINANCE HOUSE, 56 – 58 PAUL KRUGER STREET, POLOKWANE

2. INSTRUCTIONS

1. Bidders are advised to read the entire tender bulletin.
2. Tenders for procurement of supplies, services and disposals are categorized as follows:

SUPPLIES

- Accommodation, leasing of
- Audio visual equipment
- Building material
- Chemicals: Agricultural/Forestry/
- Laboratory/Water Care
- Clothing/Textiles
- Computer equipment
- Computer software
- Electrical equipment
- Electronic equipment
- Furniture
- General
- Medical
- Office equipment: Labour-saving devices
- Perishable provisions
- Stationary/printing
- Steel
- Timber
- Vehicle (all types)
- Workshop equipment

SERVICES

- Building
- Civil
- Electrical
- Functional (including cleaning-, and security services)
- General
- Maintenance of electrical, mechanical equipment and plumbing
- Mechanical
- Professional
- Repair and maintenance of vehicles
- Transport

DISPOSALS

- Clothing and textiles
- Furniture
- General
- Scrap metal
- Vehicles

3. Bid documents are generally available in English only.
4. The address where a bid document is available from and where it must be submitted to may differ.
5. The addresses at which bid documents may be obtained and to which tenders must be posted, appear in Annexure 1.
6. The address list of various Supply Chain Management Advice Centres at which bid documents and tender bulletins may also be obtained, appear in Annexure 3; and
7. The address list of Supply Chain Management satellite offices at which tender bulletins may also be obtained, appear in Annexure 4.

3. BID INVITATIONS

BID NO.	DESCRIPTION OF SERVICE OR SUPPLIES	CONTACT DETAILS	BID DOCUMENT PRICE (NON-REFUNDABLE)	DUE AT 11H00	BID DOCUMENTS OBTAINABLE FROM	POST OR DELIVER BIDS TO
					See Annexure 1 & 2, Page 09 & 11	
LDPWRIR / 20058	Supply, delivery and offloading of road signs in all five districts for a period of thirty six (36) months – term contract. Department of Public Works, Roads and Infrastructure	BID ADMINISTRATION: Moloto MV w/h Tel: (015) 284 7142 Fax:015 284 7034 molotomv@dpw.limpopo.gov.za BID SPECIFICATION: Maluleke L w/h Tel:(015) 284 7294 malulekeL@dpw.limpopo.gov.za	N/A	25/05/2021	www.dpw.limpopo.gov.za	109
LDPWRIR / 20060	Supply, delivery and offloading of building materials in all five districts for a period of thirty six (36) months – term contract. Department of Public Works, Roads and Infrastructure	BID ADMINISTRATION: Moloto MV w/h Tel: (015) 284 7142 Fax:015 284 7034 molotomv@dpw.limpopo.gov.za BID SPECIFICATION: Ramasenya Frans w/h Tel. (015) 284 7294 ramasenyaf@dpw.limpopo.gov.za	N/A	25/05/2021	www.dpw.limpopo.gov.za	109
LDPWRIB/ 20050	Construction of new ems satellite station of Bosele in Sekhukhune district in Limpopo Province CIDB CLASS GRADING: 7GB or higher	BID ADMINISTRATION: Moloto MV w/h Tel: (015) 284 7142 Fax:015 284 7034 molotomv@dpw.limpopo.gov.za BID SPECIFICATION:	N/A	25/05/2021	www.dpw.limpopo.gov.za	109

	<p>COMPULSORY BRIEFING</p> <p>Date: 13 / 05 / 2021 Venue: New ems satellite station (Thlogo tlou) in Sekhukhune District Time: 11h00</p> <p>Department of Public Works, Roads and Infrastructure</p>	<p>Gomwe T w/h Tel: (015) 284 7210 GomnweT@dpw.limpopo.gov.za</p>				
HEDP002 /21/22	<p>Supply and delivery of pharmaceutical diagnostic sets and disposable paper test strips for Limpopo Department of Health: Clinics and hospitals for a period of three years</p> <p>Department of Health</p>	<p>BID ADMINISTRATION: Ms. Simango T.O at Tel:(015) 293 6352 / Cell:071 861 9937 and Ms. Motene N.M at(015) 293 6350 / 063 692 9368</p> <p>BID SPECIFICATION: Mr. TZM Langa at Cell:(082) 990 7126 and: Ms. M.A Tel:(015) 2239080</p>	N/A	24/05/2021	<p>www.doh.limpopo.gov.za or at www.etenders.treasury.gov.za</p>	103

4. CANCELLED BIDS

4.1 .DEPARTMENT OF HEALTH

BID NO.	PROJECT DESCRIPTION	TENDER BULLETIN NO.	DATE ADVERTISED	DATE CLOSED	REASON FOR CANCELLATION
HEDP 063/18/19	Supply and delivery of pharmaceutical diagnostic sets and disposable paper test strips for Limpopo Department of Health: Clinics and hospitals for a period of thirty six months as when need arises	10 of 2019/20 FY	14/06/2019	12/07/2019	Material irregularities.

4.2. LIMPOPO TOURISM AGENCY

BID NO.	PROJECT DESCRIPTION	TENDER BULLETIN NO.	DATE ADVERTISED	DATE CLOSED	REASON FOR CANCELLATION
LTA004-20/21	Provision of Security Services – Head Office	21OF 2020/21FY	27/11/2020	18/12/2020	Acceptance of the contract withdrawn due to material error discovered on the calculations of the approved bid price.
LTA005-20/21	Provision of Security Services – Vhembe Office	21OF 2020/21FY	27/11/2020	18/12/2020	Acceptance of the contract withdrawn due to material error discovered on the calculations of the approved bid price.

5. GENERAL NOTICES

LIMPOPO (SCM ADVICE CENTERS) CSD CALL CENTRE LINES FOR SUPPLIERS

DISTRICT	CALL CENTRE NUMBER	OFFICIAL RESPONSIBLE	TIME
Capricorn	015 291 2684	Mr. Kgomo AE	07H30 TO 16H30
Mopani	015 812 0256	Ms. Nxumalo P	07H30 TO 16H30
Sekhukhune	013 265 1071	Mrs Morena MM	07H30 TO 16H30
Vhembe	015 962 0014	Mrs. Nefolovhodwe MQ	07H30 TO 16H30
Waterberg	014 717 1376	Mrs. Tsatsi AT	07H30 TO 16H30

URGENT NOTICE TO ALL LIMPOPO DEPARTMENTS, PUBLIC ENTITIES AND SUPPLIERS

NATIONAL TREASURY E-TENDER PORTAL EXPERIENCING TECHNICAL DIFFICULTIES

The National Treasury e-Tender Portal is currently experiencing technical difficulties. All Limpopo Departments and Public Entities are advised to upload tender documents of all advertised bids on their respective websites. Bidders are also advised to approach advertising institutions regarding the accessibility of tender documents.

Departments, Public Entities and bidders will be notified as soon as the matter is resolved.

ANNEXURE 1: ADDRESS LIST AND CONTACT DETAILS: LIMPOPO PROVINCIAL DEPARMENTS

UNIQUE REF. NO.	BID DOCUMENT REFERENCE	CONTACT DETAILS	DOCUMENTS SOLD AT:	DOCUMENTS DEPOSITED AT
100	DSDP	Tel: 015 293 6000 Fax: 015 293 6211 Website: www.limpopo.gov.za	Department of Social Development , Office No. 57 Ground Floor, 21 Biccard Street POLOKWANE	Deposited in the box located at Department of Social Development, 21 Biccard Street Polokwane
101	LPT	Tel: 015 298 7000 Fax: 015 295 7010 Website: www.limpopo.gov.za	Provincial Treasury 46 Hans Van Rensburg Street, POLOKWANE and all Provincial Treasury Tender Advice Centres	Deposited in the bid box located outside a guard house at Ismini Towers, 46 Hans Van Rensburg Street, Polokwane
101A	TC/LP	Tel: 015 291 8400 Fax: 015 295 3310 Website: www.limpopo.gov.za	Provincial Treasury 56 – 58 Paul Kruger Street, POLOKWANE and all Provincial Treasury Tender Advice Centres	Deposited in the bid box located in the main entrance, Finance House Building, 56-58 Paul Kruger Street, Polokwane
102	PRDP	Tel: 015 287 6000 Fax: 015 295 3840 Website: www.limpopo.gov.za	Office of the Premier , 40 Hans van Rensburg Street, POLOKWANE and all SCM Advice Centres	Deposited in the bid box located at Mowaneng Building, 40 Hans van Rensburg Street, Polokwane
103	HEDP	Tel: 015 293 6000 Fax: 015 293 6211 Website: www.limpopo.gov.za	Department of Health , Office No. D3 Ground Floor, Old Capricorn Building, 18 College Street, POLOKWANE and all Provincial Treasury Tender Advice Centres	Deposited in the box located at Department of Health and Social Development, 18 College Street, Polokwane
104	LPEDT	Tel: 015 290 7600/1 Fax: 015 297 4494 Website: www.limpopo.gov.za	Department of Education , Corner 113 Biccard and 24 Excelsior Streets, POLOKWANE and all Provincial Treasury Tender Advice Centres	Deposited in the bid box located in the main entrance of corner 113 Biccard Street and Excelsior Street, Polokwane
105	PUDP	Tel: 015 295 1000 Fax: 015 295 1163 Website: www.limpopo.gov.za	Department of Transport and Community Safety , 40 Paul Kruger Street, POLOKWANE and all Provincial Treasury Tender Advice Centres	Deposited in the bid box located at 1 st Floor, Paul Kruger Wing, 40 Paul Kruger Street, Polokwane
106	COGHSTA	Tel: 015 294 2000 Fax: 015 295 4190 Website: www.limpopo.gov.za	Department of Co-Operative Governance, Human Settlements & Traditional Affairs , 28 Market Street, Office No. G 74, Ground Floor, Polokwane.	Deposited in the bid box located at Hensa Towers, Cnr of Rabe and Landdros Mare Streets, Polokwane
107	DSAC	Tel: 015 284 4000 Fax: 015 284 4514 Website: www.limpopo.gov.za	Department of Sport, Arts and Culture Olympic Towers, Corner Rabe and Biccard Street, POLOKWANE and all Provincial Treasury Tender Advice Centre	Deposited in the bid box located in the main entrance of Olympic Towers, Corner 21 Rabe and Biccard Street, Polokwane

LIMPOPO PROVINCIAL TENDER BULLETIN NO. 05 of 2021/22 FY, 30 APRIL 2021

108	LEDET	Tel: 015 293 8300 Fax: 015 293 8319 Website: www.limpopo.gov.za	Department of Economic Development, Environment & Tourism , 90 Bok Street, POLOKWANE and all SCM Advice Centres	Deposited in the bid box located in the main entrance of Evidiki Towers, 19 Biccadd Street, Polokwane
109	LDPW & WODP	Tel: 015 284 7000 Fax: 015 284 7031 Website: www.limpopo.gov.za	Department of Public Works, Roads and Infrastructure ; Towers, 43 Church Street, POLOKWANE and all Provincial Treasury Tender Advice Centres	Deposited in the bid box located at Corner Blaawberg and River Street Ladanna Polokwane 0699 Private Bag X9490 Polokwane 0700
110	ACDP	Tel: 015 294 3000/30/60/90/20 Fax: 015 294 4506 Website: www.limpopo.gov.za	Department of Agriculture , Temo Towers, 69 Biccadd Street, POLOKWANE and all Provincial Treasury Tender Advice Centres	Deposited in the bid box located in the main entrance of AgriVillage, 69 Biccadd Street, Polokwane

ANNEXURE 2: ADDRESS LIST AND CONTACT DETAILS: LIMPOPO PUBLIC ENTITIES

UNIQUE REF. NO.	BID DOCUMENT REFERENCE	CONTACT DETAILS	DOCUMENTS SOLD AT:	DOCUMENTS DEPOSITED AT
111	RFB: LIMP	Tel: 015 293 3621 Fax: 015 293 3660 Website: www.golimpopo.com	State Information Technology Agency (SITA) Limpopo Office, Moolman Building, 27 Market Street, POLOKWANE, 0699	Bid box located in the Main Entrance of Moolman Building, 27 Market Street, Polokwane
112	LTA	Tel: 015 293 3600 Fax: 015 293 3655 Website: www.golimpopo.com	Limpopo Tourism Agency , ERF 92/688, Portion 2 Southern Gateway, Ext 4, N1 Main Road, Polokwane 0699	Bid box located in the offices ERF 92/688, Portion 2 Southern Gateway, Ext 4, N1 Main Road, Polokwane 0699
113	LGB	Tel: 015 295 5581 Fax: 015 295 3566 Website: www.lgb.org	Limpopo Gambling Board , 08 Hans van Rensburg Street, POLOKWANE, 0699	Bid box located in the main entrance, 8 Hans van Rensburg Street, Polokwane, 0699
114	LEDA	Tel: 015 633 4700 Fax: 015 633 4854 Website: www.leda.co.za	Limpopo Economic Development Agency Enterprise Development Finance, Main Road Lebowakgomo	Bid box located in the main entrance, Enterprise Development Finance, Main Road Lebowakgomo
115	RAL	Tel: 015 284 4600 Fax: 015 284 4701 Website: www.ral.co.za	Road Agency Limpopo (RAL) , RAL Towers, 26 Rabe Street, POLOKWANE, 0700	Bid box located in the entrance foyer (ground floor) of RAL Towers, at 26 Rabe Street, Polokwane
116	GAAL	Tel: 015 288 0122 Fax: 015 288 0346 Website: www.gaal.co.za	Gateway Airports Authority Limited , N1 Road to Louis Trichardt, Army Base, POLOKWANE International Airport, Polokwane, 0700	Bid box located in the main entrance, ground floor of administration building, Polokwane International Airport, Army Base
117	VIVET	Tel: 015 963 3156 Fax: 015 963 3154 Website: www.vhembecollege.edu.za	Vhembe TVET College , Central Office, Site No 203 SIBASA 0970	Vhembe TVET College , Central Office, Site No 203 SIBASA 0970
118	WTVET	Tel: 015 491 8581/8602 Fax: 015 491 8579 Website: www.procurement@waterbergcollege.co.za	Waterberg FET College , Central Office, 36 Hooge Street Street, Mokopane, 0600	Waterberg FET College , Central Office, 36 Hooge Street Street, Mokopane, Private Bag x 2449, Mokopane 0600
119	GNT	Tel. 015 291 2641 Fax. 015 291 2648	No. 130a Marshall Street, Polokwane.0700	Great North Transport No. 130 Marshall Street, Polokwane.0700
120	MT	Tel. 015 2907715/7772	Mvula Trust 25 Rhodesdrift Street, Rhodesdrift Office Park, Bendor Ext 30, Polokwane	Mvula Trust 25 Rhodesdrift Street, Rhodesdrift Office Park, Bendor Ext 30, Polokwane
121	CCTVET	Tel.015 230 1800 Fax. 015 291 2767	Capricorn College for TVET 16 Market Street, Polokwane	Private Bag Bag X9674 Polokwane0700
122	IDT	Tel: 015 295 0000 Fax: 015 295 6559	Independent Development Trust 22 Hans van Rensburg Street, Polokwane, 0700	Independent Development Trust P.O.Box 55386 Polokwane 0700
123	DBSA	scmqueries@dbsa.org	Development Bank of Southern Africa Welcome Centre 1258 Lever Road Midrand	Development Bank of Southern Africa Welcome Centre 1258 Lever Road Midrand

ANNEXURE 3: ADDRESS LIST AND CONTACT DETAILS: PROVINCIAL TREASURY TENDER ADVICE CENTRES

(Tender bulletins and bid documents are obtainable from the following Centers):

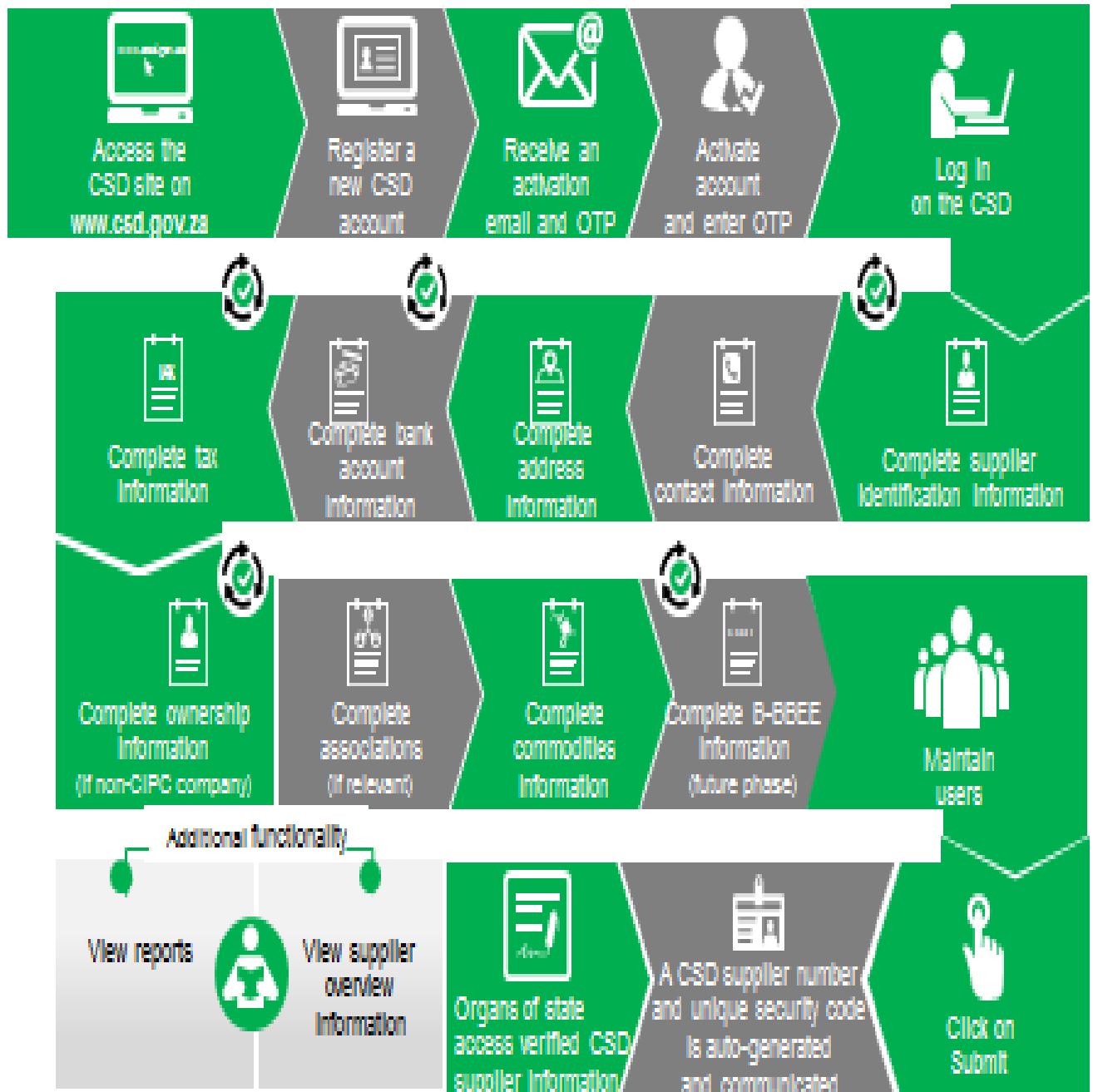
PROVINCIAL TREASURY SUPPLY CHAIN MANAGEMENT ADVICE CENTRES	
<p>HEAD OFFICE</p> <p>Provincial Supply Chain Management Office 56 – 58 Paul Kruger Street POLOKWANE Private Bag x9494 POLOKWANE, 0700 Tel No. (015) 291 8400</p> <p>Contact: Ms. M.B Rakubu @ Tel: 015 291 8717/6</p>	<p>Capricorn SCM Advice Centre</p> <p>Limpopo Provincial Treasury 56-58 Paul Kruger Street Private Bag x9494 POLOKWANE, 0700 Tel No. (015) 291 8400</p> <p>Contact Person: Ms. M.M. Masindi</p>
<p>Vhembe SCM Advice Centre</p> <p>Limpopo Provincial Treasury Government Building Complex BLOCK E GROUND FLOOR THOHOYANDOU, VENDA Tel: (015) 962 1752 Fax: (015) 962 1282</p> <p>Contact Person: Ms. A Manena</p>	<p>Mopani SCM Advice Centre</p> <p>Limpopo Provincial Treasury Private Bag X 1973 GIYANI, 0826 Tel: (015) 812 0149 Fax: 086 219 7905</p> <p>Contact Person: Mr. G Muravha</p>
<p>Waterberg SCM Advice Centre</p> <p>Limpopo Provincial Treasury 98 Nelson Mandela Street Decimale Building MODIMOLLE Tel: (014) 717 5837 Fax: (014) 717 5670</p> <p>Contact Person: Mr. AT Tsatsi</p>	<p>Sekhukhune SCM Advice Centre</p> <p>Limpopo Provincial Treasury Lefa Centre, Schoonoord Road JANE FURSE Tel: (013) 265 1344 Fax: (013) 265 1354</p> <p>Contact Person: Mr. M. S. Sehale</p>

ANNEXURE 4: ADDRESS LIST AND CONTACT DETAILS: SATELLITE OFFICES

(Tender bulletins are obtainable from the following centers)

CAPRICORN	VHEMBE	MOPANI	WATERBERG	SEKHUKHUNE
			Libsa Thabazimbi: No.08 Riet Bok Street Tel. No. (014) 772 2437	
			Libsa Lephalale No. 3A Venter Street Tel. No. (014) 763 2834	

Supplier Self-Registration Process



Auto verification of supplier information with SARS, GPC etc